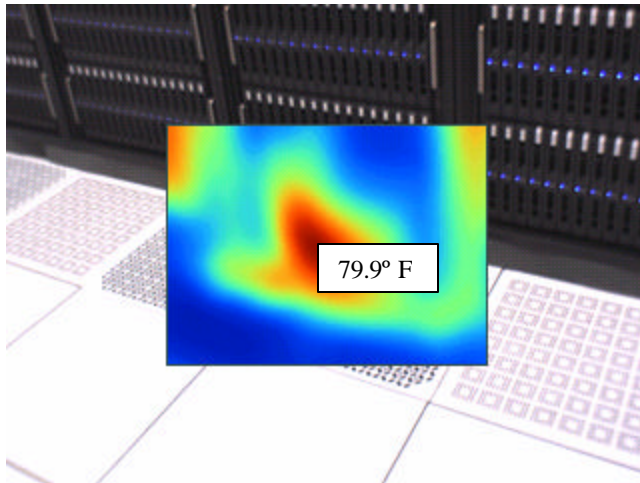


Under Cabinet Temperature Before and After Closure

September, 2007

Before

A cabinet with 4" space underneath without the block. The hottest point was nearly 80° F, even though the cabinet was right in front of a perforated tile. This shows how much hot air is re-circulating from the back of the cabinet back toward the front of the server that again needs to be re-cooled, reducing efficiency.



After

Just 10 minutes after blocking the space, the temperature had dropped over 10° F, showing how effective the block is at keeping cool air at the front of the cabinets and increasing overall efficiency of the system.

